

GENERAL NOTES:

- A. ALL WORK SHALL COMPLY WITH ALL LOCAL AND STATE CODES AND AUTHORITIES HAVING JURISDICTION.
- B. THE CONTRACTOR SHALL SECURE AND PAY FOR ALL REQUIRED PERMITS AND ARRANGE ALL REQUIRED INSPECTIONS.
- C. THE CONTRACTOR SHALL COORDINATE HIS WORK WITH OTHER CONTRACTORS AND TRADES.
- D. THESE DRAWINGS, AS PREPARED, ARE DIAGRAMMATIC BUT SHALL BE FOLLOWED AS CLOSELY AS CONSTRUCTION OF THE PROJECT AND THE WORK OF THE TRADES WILL PERMIT. EQUIPMENT LOCATIONS INDICATED ARE APPROXIMATE. COORDINATE EXACT LOCATIONS AND REQUIRED CLEARANCES WITH EQUIPMENT SUPPLIER AND ALL TRADES PRIOR TO INSTALLATION.
- E. THE CONTRACTOR SHALL FURNISH AND INSTALL ALL THE EQUIPMENT INDICATED WITHIN THE MECHANICAL DRAWINGS UNLESS OTHERWISE NOTED. ALL EQUIPMENT SHALL BE UL LISTED. VERIFY LOCATION AND DIMENSIONS IN THE FIELD PRIOR TO FABRICATION AND / OR INSTALLATION.
- F. ALL ROOF PENETRATIONS SHALL BE AT THE CONTRACTOR'S EXPENSE. COORDINATE WITH OWNER'S ROOFING CONTRACTOR SO AS NOT TO VOID ANY EXISTING ROOF WARRANTIES.
- G. EACH UNIT GENERATING CONDENSATE SHALL BE PROVIDED WITH A CONDENSATE DRAIN WITH EXTERNAL, 4" DEEP P-TRAP. EXTEND DRAIN TO A ROOF MOUNTED SPLASH PAD OR AN ACCEPTABLE LOCATION REQUIRED BY CODE.
- H. DUCT SIZES SHOWN ON DRAWINGS ARE CLEAR INSIDE DIMENSION.
- I. ALL METAL DUCT AND AIR DISTRIBUTION DEVICES SHALL BE INSULATED WITH R-6, 75 DENSITY FOIL-BACKED INSULATION WITH FIRE AND SMOKE RATING 25-50).
- J. ALL DUCTWORK SHALL BE FABRICATED, INSTALLED, SEALED, AND INSULATED PER THE LATEST ISSUE OF SMACNA LOW-VELOCITY DUCT MANUAL.
- K. UNLESS OTHERWISE NOTED, ALL SUPPLY TAKEOFFS SHALL HAVE A MANUAL VOLUME CONTROL DAMPER.
- L. ALL FLEX DUCT SHALL BE UL LISTED, R-6, FOIL-BACKED, CLASSIFIED AS A CLASS 1 AIR DUCT. MAXIMUM LENGTH IS TO BE 12'-0" PER DROP OR PER LOCAL CODE.
- N. THE CONTRACTOR SHALL COORDINATE DIFFUSER LOCATIONS ON SITE WITH THE MOST RECENT REFLECTED CEILING PLAN.
- O. THE CONTRACTOR IS TO MAKE ALL LOW-VOLTAGE WIRING CONNECTIONS FOR ALL HVAC EQUIPMENT INCLUDING TEMPERATURE CONTROLS, ROOF TOP UNITS, SMOKE DETECTORS AND CONTACTOR PANEL.
- P. PROVIDE AND INSTALL SMOKE DUCT DETECTORS IN EACH AIR CONDITIONING UNIT RETURN DUCT GREATER THAN 2000 CFM. CONTRACTOR SHALL PROVIDE INTERCONNECTION AND WIRE TO THE FIRE ALARM CONTROL PANEL IF REQUIRED. DUCT DETECTORS SHALL HAVE REMOTE TEST STATIONS LOCATED IN THE OFFICE NEAR THE RESPECTIVE THERMOSTATS. VERIFY CODE REQUIREMENTS FOR DUCT DETECTORS IN BOTH THE SUPPLY AND RETURN AIR STREAMS.
- Q. THE ENTIRE INSTALLATION SHALL BE GUARANTEED FREE OF DEFECTS AND CONTRACTOR SHALL REPAIR AND / OR REPLACE ANY DEFECTIVE MATERIALS OR EQUIPMENT AT NO COST TO THE OWNER FOR A MINIMUM PERIOD OF ONE YEAR FROM THE DATE OF ACCEPTANCE BY ARCHITECT OR ENGINEER.
- R. ALL WORK SHALL BE SUBJECT TO THE ACCEPTANCE AND APPROVAL OF THE ARCHITECT AND OWNER. THE ARCHITECT SHALL BE NOTIFIED OF ANY AND ALL DISCREPANCIES BETWEEN FIELD CONDITIONS AND THE CONTRACT DOCUMENTS BEFORE PROCEEDING WITH THAT PORTION OF THE WORK. FAILURE OF PROPER NOTIFICATION DOES NOT RELIEVE THE CONTRACTOR. THE CONTRACTOR SHALL CORRECT ANY AND ALL WORK ARISING FROM SUCH FAILURE TO COORDINATE DISCREPANCIES TO THE SATISFACTION OF THE ARCHITECT WITHOUT ADDITIONAL COST TO THE OWNER.
- S. THE CONTRACTOR SHALL, UPON COMPLETION OF PROJECT, PERFORM A COMPLETE TEST AND BALANCE OF ALL EQUIPMENT. PROVIDE A WRITTEN REPORT TO THE ARCHITECT. ALL CAPACITIES MUST BE SET TO WITHIN ±10% OF AMOUNTS INDICATED ON THE FLOOR PLAN AND SCHEDULES.

HVAC PERFORMANCE GUIDELINES:

THE DESIGN PROFESSIONAL SHALL PERFORM A HEATING AND COOLING LOAD CALCULATION FOR EACH STORE DESIGNED.

TEMPERATURE (AMBIENT): 72 - 75 DEGREES  
HUMIDITY (AMBIENT):

- NO LESS THAN 40%
- MAXIMUM 70%
- OPTIMAL 50-60%

HUMIDITY LEVELS IN PORTIONS OF THE CONTINENTAL UNITED STATES ARE HIGH ENOUGH TO EFFECT THE PRODUCTS SOLD IN THE STORES. THE DESIGN PROFESSIONAL SHALL ACCOUNT FOR THE OUTSIDE AIR CONDITIONS WHEN DESIGNING THE HVAC SYSTEM.

PLEASE VISIT THIS WEB SITE FOR CLIMATE REGIONS BY COUNTY.  
WWW.ENERGY.GOV/SITES/PROD/FILES/2015/10/F27/BA\_CLIMATE\_REGION\_GUIDE\_7.3.PDF

KEYED NOTES:

1. CONNECT AIR DISTRIBUTION DUCT TO ROOF MOUNTED UNIT EQUIPMENT AS NECESSARY. PROVIDE TRANSITION IN CURB AS REQUIRED FOR UNIT CONNECTION.
2. EXHAUST FOR OVENS AND TOASTERS. HOOD IS REQUIRED AT THE SANDWICH STATION. HOOD IS OPTIONAL AT THE BACK OF HOUSE OVEN. IF A HOOD IS REQUIRED FOR OVEN BY LOCAL JURISDICTION PROVIDE TYPE-II "HEAT ONLY" HOOD. RUN SHEETMETAL DUCT FROM CONNECTION ON HOOD TO RESPECTIVE EXHAUST FAN. OFFSET AND TRANSITION AT CONNECTIONS AS NEEDED. VERIFY DIMENSIONS PRIOR TO FABRICATION OR INSTALLATION. USE FACTORY-MANUFACTURED PIPE AND FITTINGS ONLY. VERIFY LOCATION ON SITE WITH MOST RECENT KITCHEN PLANS.
3. PROVIDE PROGRAMMABLE THERMOSTAT WITH LOCKING COVER. LOCATE THERMOSTAT IN MANAGER'S OFFICE. PROVIDE REMOTE SENSOR LOCATED 72" ABOVE FINISHED FLOOR NEAR LOCATION INDICATED. SEAL WALL OPENINGS WITH CAULK. COORDINATE LOCATION ON SITE WITH GENERAL CONTRACTOR AND EQUIPMENT. AVOID LOCATING NEAR OR ABOVE SOURCES OF HEAT.
4. CONCENTRIC VENT LINE FOR COMBUSTION AIR INTAKE / EXHAUST FROM GAS FIRED EQUIPMENT TO ROOF TERMINATION KIT. ROUTE PIPING FROM RESPECTIVE UNIT TO LOCATION INDICATED ON ROOF PLAN. ROUTE PIPING WITH MINIMAL AMOUNT OF BENDS AND MINIMUM LENGTH AS REQUIRED BY RESPECTIVE UNIT MANUFACTURERS REQUIREMENTS.
5. TOILET ROOM EXHAUST AIR DUCT UP THROUGH ROOF. TERMINATE ON ROOF WITH MUSHROOM CAP AIR RELIEF VENT WITH INSECT SCREEN.
6. HOOD CONTROLLER UNIT. COORDINATE WITH CAPTIVE AIRE ON THE REQUIRED LOCATION AND CONNECTION REQUIREMENTS. COORDINATE WITH ELECTRICAL CONTRACTOR FOR ELECTRICAL CONNECTIONS.
7. ROOM TEMPERATURE SENSOR FOR THE CONTROL OF THE HOODS. COORDINATE WITH CAPTIVE AIRE ON THE REQUIRED LOCATION AND CONNECTION REQUIREMENTS.

PROJECT NO: 26010  
DRAWN: DJH  
CHECKED: WAT  
DATE: APRIL 2026  
LAST REV:

M1.01

26010  
DJH  
WAT  
APRIL 2026

2026, Alliance Design Group, LLC all rights reserved

1439 Centre Ct., Ste 401  
Alexandria, LA 71301  
Ph: 318.445.3151  
F: 318.445.3988  
E: adg@adgllc.net

ALLIANCE  
DESIGN GROUP, LLC

REGISTERED ARCHITECT  
STATE OF LOUISIANA  
No. 45,454  
JAN 1998

DUNKIN'  
BASKIN-ROBBINS™  
1111 MacArthur Drive  
Alexandria, Louisiana 71301



1

2

3

ROOF TOP UNIT SCHEDULE

UNIT ID	MANUFACTURER	EFFICIENCY	MODEL	AREA SERVED	NOMINAL TONS	SUPPLY FAN			GAS HEAT		COOLING				ELECTRICAL				EER	IEER	OPERATING WEIGHT	NOTES	
						TOTAL CFM	OUTSIDE AIR	STATIC PRESSURE	INPUT MBH	OUTPUT MBH	TOTAL MBH	SENSIBLE MBH	AMBIENT DB	ENTERING DB / WB	STAGES	VOLTS	PHASE	MCA					MOCp
RTU-1	TRANE	HIGH	YHC120F3RMA-H0BA1A	FRONT OF HOUSE	10	4000	800	0.75	200	140	119	95.2	95	80/67	2	208	3	50.3	60	11.3	14.5	1500	1-14
	RHEEM	HIGH	RKKL-B120CL22EAHG					0.8	225	112.5	119	87.2			2			51	60	11.2	12.9	1020	1-14
	CARRIER	HIGH	#48HCED11					0.75	224	180	119.8	92.5			2			53	60	12.0	14.0	1448	1-14
RTU-2	TRANE	HIGH	YHC092F3RMA-H0BOA1A	BACK OF HOUSE	7.5	3000	400	0.75	150	120	92	68	95	80/67	1	208	3	41.9	50	12.6	14.5	1291	1-14
	RHEEM	HIGH	RGED75090ACG15-2CAGH5					0.8	150	121.5	86.5	61.2			2			44	60	11.0	12.7	820	1-14
	CARRIER	HIGH	#48HCED08					0.75	180	146	93.3	72.2			2			41	50	12.0	13.8	1122	1-14

NOTES:

1. All Equipment Must Be High Efficient, Meeting Or Exceeding The Brands Minimum Requirements.

2. Electrical Connection To Be Single Point And To Be Through The Bottom Of The Unit

3. Provide Disconnect Switch And An Unpowered Gfrc Receptacle.

4. 14" Roof Curb - Contractor Shall Field Insulate, Ship ASAP Ahead Of The Unit.

5. Condensate Drain With 2" Deep Vented Trap Discharge To Splash Block On Roof.

6. Cabinet With 1/2" Fiberglass Insulation.

7. Unit Shall Be Complete With Gas Heating Section. Gas Regulator To Receive 7" Gas Pressure From Main.

8. Dry Bulb Economizer With Barometric Relief / 25% Manual Outside Air Damper Assembly With Hood (zone 'e' Only).

9. Provide 8-wire, 24 Vac, Automatic Changeover, 2-stage Heat / Cool, Remotely Programmable Thermostat

10. Remote Sensors Shall Be Provided In Space Wired Back To Programmable, 24 Hour, 7 Day, Thermostats.

11. Anti Short Cycle Timer.

12. Throwaway 2" Filters (merv 8).

13. Where Required, Provide Low Ambient Cooling Capability Down To 0 Degrees F.

14. Provide All Compressors With 5 Year Warranty.

15. Return And / Or Supply Air Smoke Detector - Unit Mounted

16. VFD Supply Fan

17a. If Required: Carrier - Unit Installed with "Humidi-MiZe" dehumidification system. Provide humidity sensor next to thermostat

17b. If Required: Trane - Hot gas reheat with associated controls and sensors for dehumidification control.

DBI HVAC NATIONAL ACCOUNTS

DBI HAS NATIONALLY ACCOUNTED TWO HVAC MANUFACTURERS TO SUPPLY ROOFTOP EQUIPMENT FOR THE BRAND. CONTACT INFORMATION IS AS NOTED FOR EACH OF THE MANUFACTURERS BELOW.

RHEEM MANUFACTURING

ACCOUNT REPRESENTATIVE:

LUKE BABEY

CELL 904-271-1126

EMAIL LUKE.BABEY@RHEEM.COM

WEB: WWW.RHEEM.COM

CARRIER CORPORATION

ACCOUNT REPRESENTATIVE:

PAUL WITZ

CELL 315-317-2481

FAX 860-998-2679

PAUL.WITZ@CARRIER.UTC.COM

TRANE, INC.

ACCOUNT REPRESENTATIVE:

JONATHAN RALYS

P: 978 737 3814

F: 978 737 3921

E: JONATHAN.RALYS@TRANE.COM

ADDITIONAL ROOFTOP UNIT INFORMATION, CONTACT INFORMATION AND PRICING / ORDERING INFORMATION CAN BE FOUND ON THE NATIONAL ACCOUNT PORTION OF THE DBI CONSTRUCTION EXTRANET:

C

FAN SCHEDULE														
UNIT ID	MANUFACTURER	HOOD LENGTH	MODEL	CFM	TYPE	DRIVE	FAN RPM	S.P.	MOTOR			SERVICE	INTERLOCKED WITH	NOTES / ACCESSORIES
								(IN. W.G.)	HP	VOLTS	PHASE			
EF-1	CAPTIVE-AIRE	4'-6"	DU12HFA	450	ROOF	DIRECT	1500	0.5	1/4	120	1	JUST BAKED OVENS	HOOD CONTROL	1,2,3,4,5,6,7,8
EF-2	CAPTIVE-AIRE	5'-3"	DU33HFA	525	ROOF	DIRECT	1212	0.5	1/3	120	1	TOASTER AND TURBO	HOOD CONTROL	1,2,3,4,5,6,7,8
EF-2	CAPTIVE-AIRE	6'-0"	DU33HFA	600	ROOF	DIRECT	1285	0.5	1/3	120	1	TOASTER AND TURBO	HOOD CONTROL	1,2,3,4,5,6,7,8
EF-2	CAPTIVE-AIRE	6'-4"	DU33HFA	640	ROOF	DIRECT	1328	0.5	1/3	120	1	TOASTER AND TURBO	HOOD CONTROL	1,2,3,4,5,6,7,8
EF-3	GREENHECK	-	SP-A110	110	CEILING	DIRECT	950	0.125	FRAC	120	1	RESTROOMS	LIGHTS	1,4,6,8
NOTES / ACCESSORIES: 1. Birdscreen 2. Weather Proof Disconnect Switch 3. Variable Speed Control 4. Speed Control Switch 5. Thermal Overload Protection 6. Gravity Backdraft Damper 7. Roof Curb 8. AMCA Seal & UL Certified														

HOODS										
UNIT ID	MANUFACTURER	LENGTH	MODEL	SERVICE	COOKING TEMPERATURE	EXHAUST			CONSTRUCTION	WEIGHT
						AIR	COLLAR	SP		
HOOD-1	CAPTIVE-AIRE	4'-6"	6024 VHB	JUST BAKED OVENS	700 DEG F	450	10"	0.041	430 STAINLESS STEEL	227 LBS
HOOD-2	CAPTIVE-AIRE	5'-3"	3624 VHB	TOASTER / TURBO	700 DEG F	525	10"	0.056	430 STAINLESS STEEL	172 LBS

D

DIFFUSER AND REGISTER SCHEDULE						
UNIT ID	MANUFACTURER	MODEL	SIZE	DESCRIPTION	REMARKS	
A	METALAIRE	570006-AL (01) WHITE	24x24	Aluminum, 2-cone Square Face Diffuser With Round Neck. Aluminum, With Adjustable Discharge And Radial Opposed Blade Damper, Model D3.	1,2,3,4,5	
		570006-AL (03) BLACK				
B	METALAIRE	570006-AL (01) WHITE	12x12	Aluminum, 2-cone Square Face Diffuser With Round Neck. Aluminum, With Adjustable Discharge And Radial Opposed Blade Damper, Model D3.	1,2,3,4,5	
		570006-AL (03) BLACK				
C	METALAIRE	RH-6 (01) WHITE	24X24	Aluminum Return Grille -0.667" Spacing Set At 45 Degree Angle, Volume Control Opposed Blade Dampers, Model OBDA.	1,2,4	
		RH-6 (03) BLACK				
E	METALAIRE	RH-6 (01) WHITE	24X24	Aluminum Return Grille -0.667" Spacing Set At 45 Degree Angle, Volume Control Opposed Blade Dampers, Model OBDA.	1,2,4	
		RH-6 (03) BLACK				
NOTES:				Round Neck Size Schedule		
1. Maximum Noise Criterion Rating < 35 DBA. 2. Baked Enamel Finish, Color To Be Selected By Architect. 3. Diffusers Shall Be 4-Way Blow Unless Otherwise Indicated On Plans. 4. Mounting Frame Type Shall Be Coord. With Ceiling / Wall Construction Type. 5. Neck Size Shall Be As Scheduled.				Up To 100 Cfm		- 6" DIA
				101 To 225 Cfm		- 8" DIA
				226 To 375 Cfm		- 10" DIA
				376 To 600 Cfm		- 12" DIA
				601 To 900 Cfm		- 14" DIA
901 To 1100 cfm		- 15" DIA				

E

F1 GRAVITY RELIEF VENTILATOR DETAIL										F2 ROOF TOP UNIT INSTALLATION									
NOT TO SCALE										NOT TO SCALE									

F4 DUCT LINER INSTALLATION DETAIL										F5 COMMENTS									
NOT TO SCALE										NOT TO SCALE									

4

5

ROUND DUCT FLEXIBLE OR RIGID EXTERNALLY INSULATED

1 1/2" WIDE 22 GAUGE STEEL STRAP ATTACHED TO ROOF STRUCTURE TO PREVENT SAGGING.

SPIN-IN FITTING WITH BALANCING DAMPER AND 45° EXTRACTOR (DAMPER USED FOR ROUGH BALANCING)

VOLUME DAMPER WITHIN DIFFUSER (FOR FINAL BALANCE ADJUSTMENT)

INSULATE TOP OF DEVICE

MINIMUM RADIUS SHALL BE AT LEAST THE DIAMETER OF THE DUCTWORK

METAL SUPPLY DUCT EXTERNALLY INSULATED

DIFFUSER

CEILING

COMMENTS:

1. REFER TO THE MECHANICAL EQUIPMENT SCHEDULE FOR COMPONENT AND DEVICE SPECIFICATIONS.
2. SUPPORTS FOR FLEX DUCTWORK SHALL BE SPACED AT 4'-0" MAX. FLEX DUCT SHALL SAG NO MORE THAN 1/2" PER FOOT OF RUN.
3. ALL DUCT INSULATION SHALL HAVE A MINIMUM INSULATING VALUE OF R-6.
4. APPLY MASTIC DUCT SEALER AT EACH JOINT OR SEAM OR CONNECTION.
5. APPLY MASTIC TO DIFFUSER COLLAR AND SLIDE FLEX OVER WHILE STILL WET, BAND CLAMP AND TAPE.
6. SUPPORT DUCTWORK WITH 1 1/2" WIDE 22 GAUGE STEEL STRAPS FIRMLY ATTACHED TO THE BUILDING STRUCTURE. SPACING SHALL BE MAXIMUM 10'-0" FOR RIGID DUCTWORK, AND MINIMUM 4'-0" FOR FLEXIBLE DUCTWORK. 12 GAUGE WIRE MAY BE SUBSTITUTED FOR STRAPS IF 1 1/2" WIDE 22 GAUGE STEEL SADDLES ARE USED TO FULLY ENIRCLE DUCT. REFER TO THE HVAC DUCT CONSTRUCTION STANDARDS PUBLISHED BY SMACNA FOR ADDITIONAL DETAILS. FULLY COMPLY WITH MECHANICAL CODES.

B4	DIFFUSER/FLEX DUCT CONNECTION DETAIL
NOT TO SCALE	

Field Insulate Curb

Shim Curb As Required To Level

Supply Air Duct (Bottom)

Return Air Duct (Bottom)

Economizer Hood

Natural Gas Connection To Rooftop Unit

Disconnect Switch

Wiring To Power Supply

Control Wiring To Indoor Thermostat

Roof Curb

Condensate Trap

D4	ROOFTOP TOP UNIT SCHEMATIC DIAGRAM
NOT TO SCALE	

Lapped And Butted Corner

Washer

Liner

Welded Pin Press-On Head

1" Thick Duct Liner

Folded Corner

All Transverse Edges To Be Coated With Adhesive (Miracle DF 96).

Duct Section (Typically 4ft. Or 5ft.)

COMMENTS:

1. LINER SHALL EXTEND A MINIMUM OF 15' FROM ALL SUPPLY RETURN AND EXHAUST DUCTWORK CONNECTED TO ANY FAN DRIVEN EQUIPMENT.
2. TOILET EXHAUST SYSTEM DUCTWORK DOES NOT REQUIRE LINING.
3. MAXIMUM SPACING FOR FASTENERS. ACTUAL INTERVALS ARE APPROXIMATE.
4. LINER ADHERED TO THE DUCT WITH 90% MINIMUM AREA COVERAGE OF ADHESIVE.
5. THE VELOCITY RATED SIDE OF LINER MUST FACE THE AIR FLOW.

Velocity	Dimensions			
	A	B	C	E
0-2500 FPM	3"	12"	4"	18"
2501-6000 FPM	3"	6"	4"	16"

F4	DUCT LINER INSTALLATION DETAIL
NOT TO SCALE	

PROJECT NO: 26010  
DRAWN: DJH  
CHECKED: WAT  
DATE: APRIL 2026  
LAST REV: 0

M2.01

1439 Centre Ct., Ste 401  
Alexandria, LA 71301  
Ph: 318.445.3151  
F: 318.445.3988  
E: adm@adgllc.net

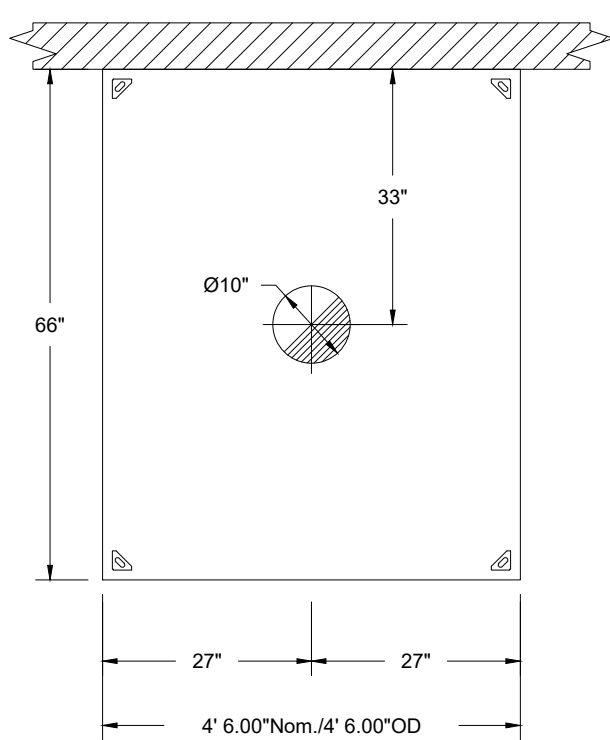
ALLIANCE  
DESIGN GROUP, LLC

REGISTERED ARCHITECT  
No. 445,304  
State of Louisiana  
Walter P. Adams

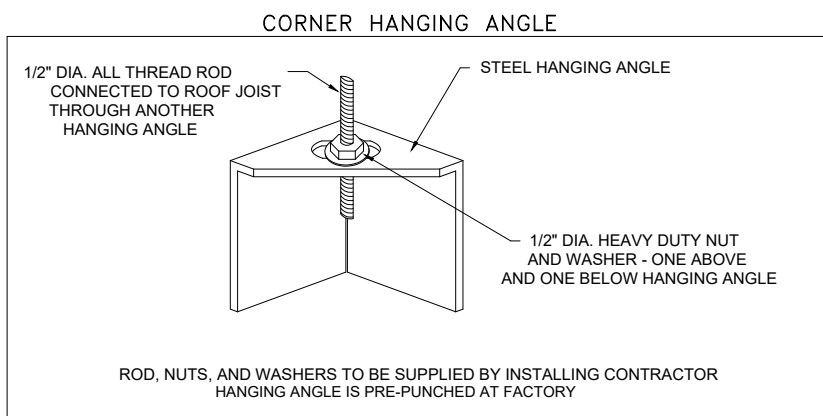


HOOD INFORMATION - Job#2887537

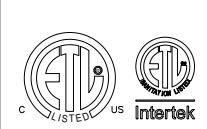
HOOD NO.	TAG	MODEL	LENGTH	MAX. COOKING TEMP.	TOTAL EXH. CFM	EXHAUST PLENUM (RISERS)				HOOD CONSTRUCTION	HOOD HANGING WT.
						WIDTH	LENG.	DIA.	CFM	S.P.	
1	Back House Oven	6624 VHB	4' 6.00"	700 Deg	450		10"	450	-0.04"	430 SS 100%	237 LBS



PLAN VIEW - Hood #1 (Back House Oven)  
4' 6.00" LONG 6624VHB



FOR QUESTIONS, CALL THE  
SOUTHWEST FLORIDA REGIONAL OFFICE  
4519 GEORGE RD, SUITE 150, TAMPA, FL 33634  
PHONE: (800)378-2471 FAX: (813)354-4825



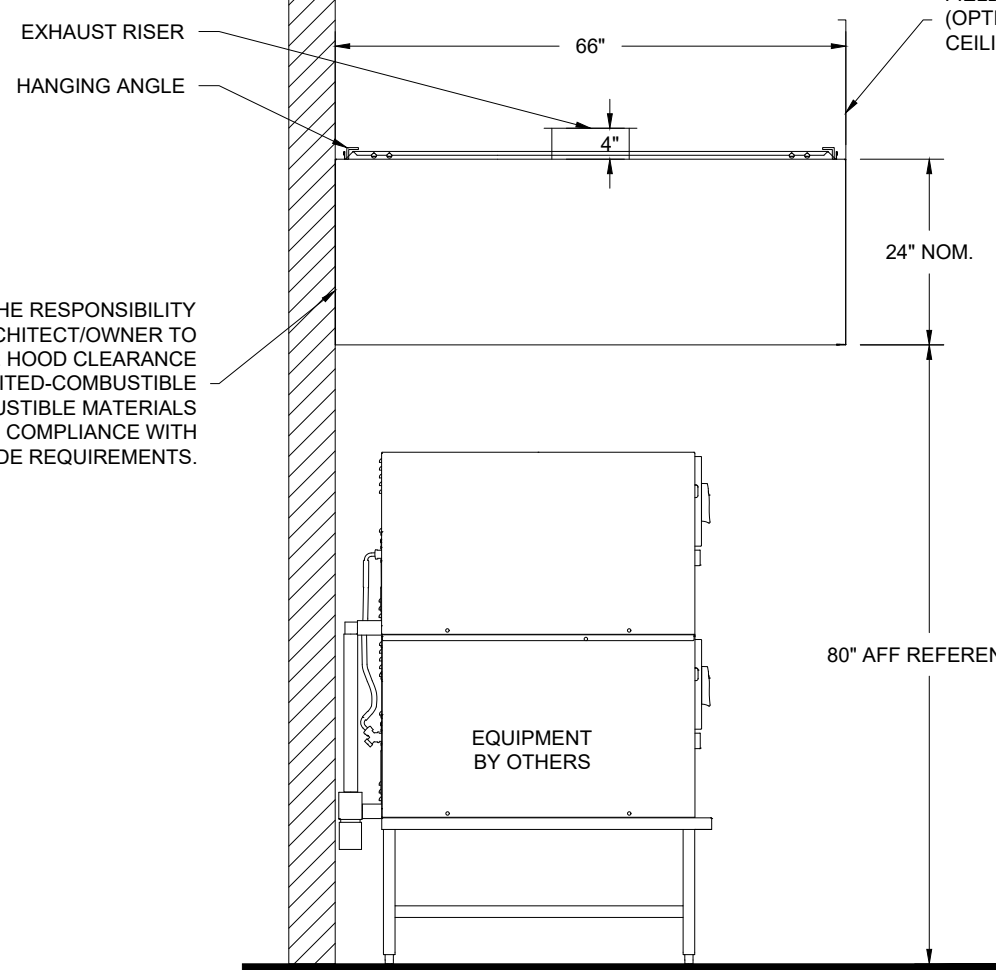
**CAPTIVEAIRE**

JOB Dunkin Donuts - Prototype 5.3			
LOCATION	. 0	JOB #	2887537
DATE	1/13/2017	DRAWN BY	DC
DWG #	1	SCALE	NTS
REV.			

CAPTIVE-AIRE HOODS ARE  
BUILT IN COMPLIANCE WITH



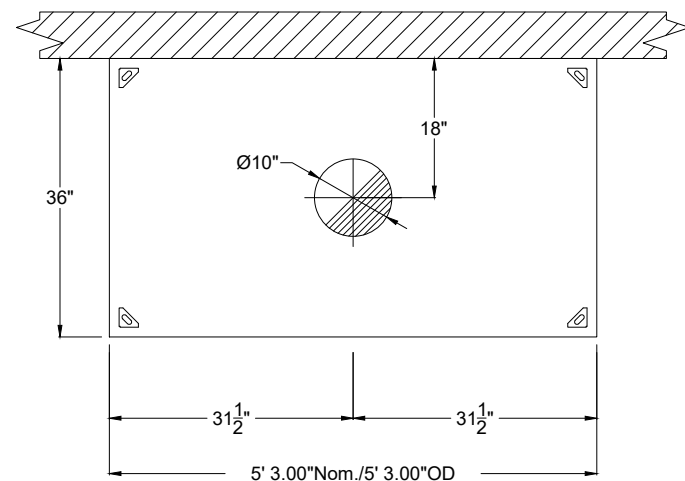
NFPA #96  
UL 710 & ULC710 STANDARDS  
E.T.L. LISTED 3054804-001



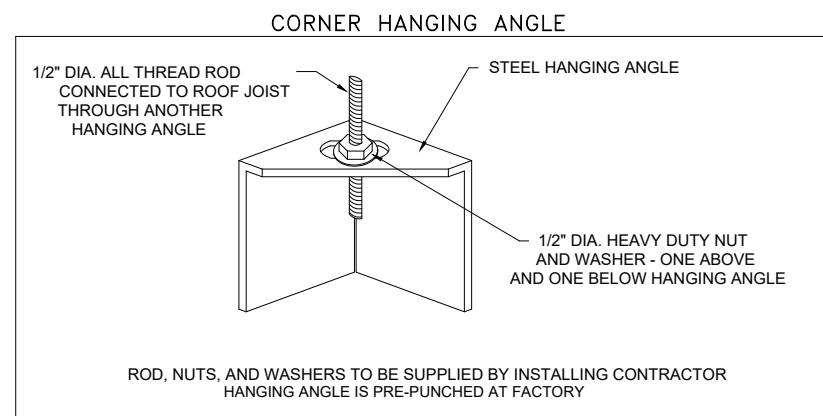
SECTION VIEW - MODEL 6624VHB  
HOOD - #1 (Back House Oven)

HOOD INFORMATION - Job#2887537

HOOD NO.	TAG	MODEL	LENGTH	MAX. COOKING TEMP.	TOTAL EXH. CFM	EXHAUST PLENUM (RISERS)				HOOD CONSTRUCTION	HOOD HANGING WT.
						WIDTH	LENG.	DIA.	CFM	S.P.	
2	Sandwich Station	3624 VHB	5' 3.00"	700 Deg	525		10"	525	-0.056"	430 SS 100%	172 LBS



PLAN VIEW - Hood #2 (Sandwich Station)  
5' 3.00" LONG 3624VHB



FOR QUESTIONS, CALL THE  
SOUTHWEST FLORIDA REGIONAL OFFICE  
4519 GEORGE RD, SUITE 150, TAMPA, FL 33634  
PHONE: (800)378-2471 FAX: (813)354-4825



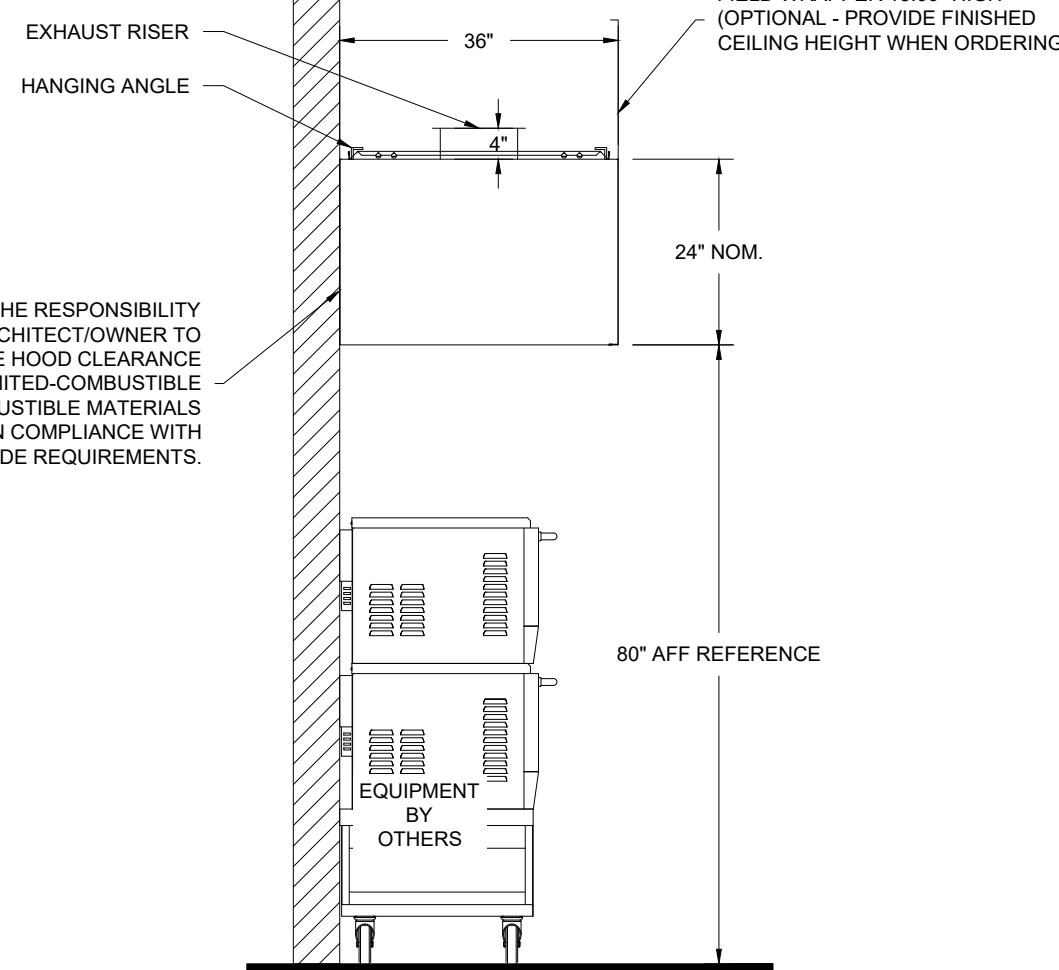
**CAPTIVEAIRE**

JOB Dunkin Donuts - Prototype 5.3			
LOCATION	. 0	JOB #	2887537
DATE	1/13/2017	DRAWN BY	DC
DWG #	2	SCALE	NTS
REV.			

CAPTIVE-AIRE HOODS ARE  
BUILT IN COMPLIANCE WITH



NFPA #96  
UL 710 & ULC710 STANDARDS  
E.T.L. LISTED 3054804-001

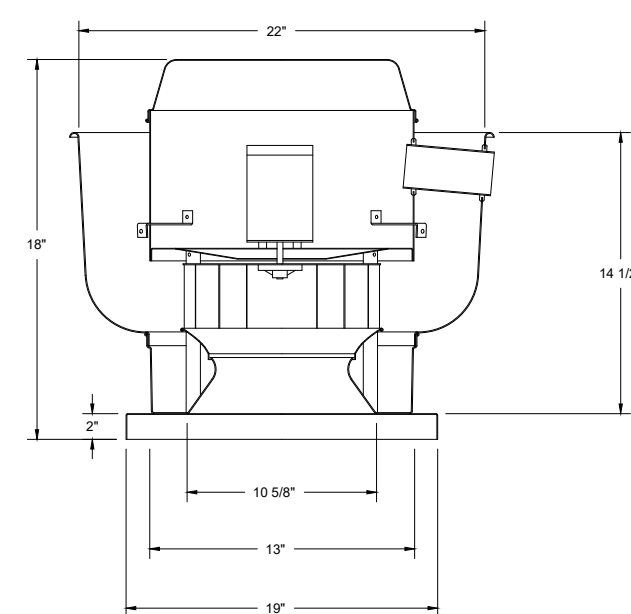


SECTION VIEW - MODEL 3624VHB  
HOOD - #2 (Sandwich Station)

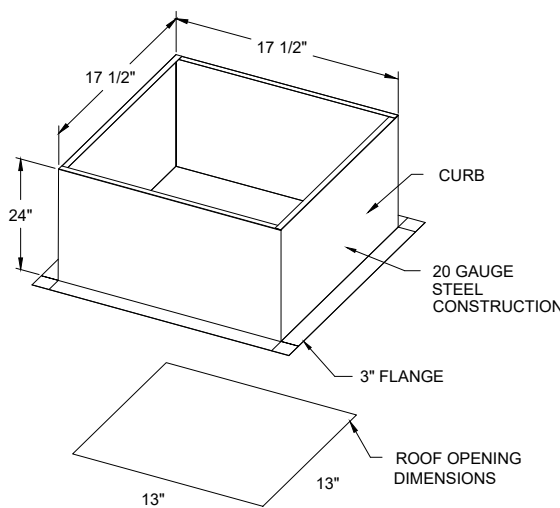
EXHAUST FAN INFORMATION - Job#2887537

FAN UNIT NO.	TAG	FAN UNIT MODEL #	CFM	ESP.	RPM	H.P.	B.H.P.	Ø	VOLT	FLA	WEIGHT (LBS.)	SONES
1	Backhouse Oven	DU12HFA	450	0.500	1500	0.250	0.1480	1	115	1.3	44	9.2

FAN #1 DU12HFA - EXHAUST FAN (BACKHOUSE OVEN)

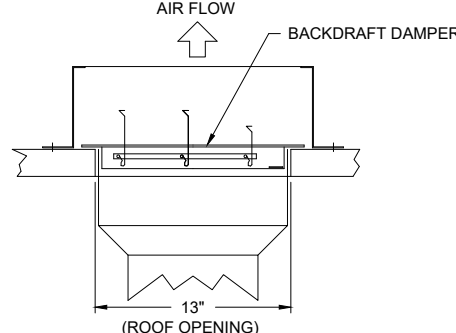


- FEATURES:
- DIRECT DRIVE CONSTRUCTION (NO BELTS/PULLEYS)
  - ROOF MOUNTED FANS
  - UL705
  - VARIABLE SPEED CONTROL
  - INTERNAL WIRING
  - WEATHERPROOF DISCONNECT
  - THERMAL OVERLOAD PROTECTION (SINGLE PHASE)
- OPTIONS
- SCR-12 BIRD SCREEN  
ECM WIRING PACKAGE  
1 1/2-BDD DAMPER



PITCHED CURBS ARE AVAILABLE  
FOR PITCHED ROOFS.  
SPECIFY PITCH:  
EXAMPLE: 7/12 PITCH = 30° SLOPE

BACKDRAFT DAMPER INSTALLATION



FOR QUESTIONS, CALL THE  
SOUTHWEST FLORIDA REGIONAL OFFICE  
4519 GEORGE RD, SUITE 150, TAMPA, FL 33634  
PHONE: (800)378-2471 FAX: (813)354-4825



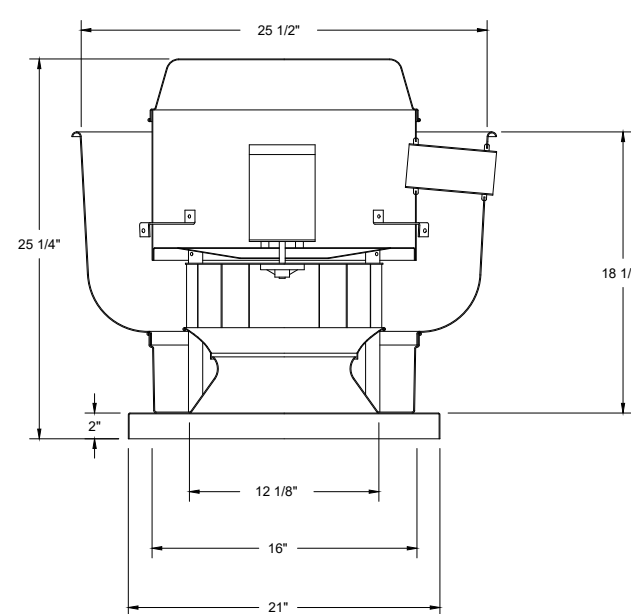
**CAPTIVEAIRE**

JOB Dunkin Donuts - Prototype 5.3			
LOCATION	. 0	JOB #	2887537
DATE	1/13/2017	DRAWN BY	DC
DWG #	3	SCALE	NTS
REV.			

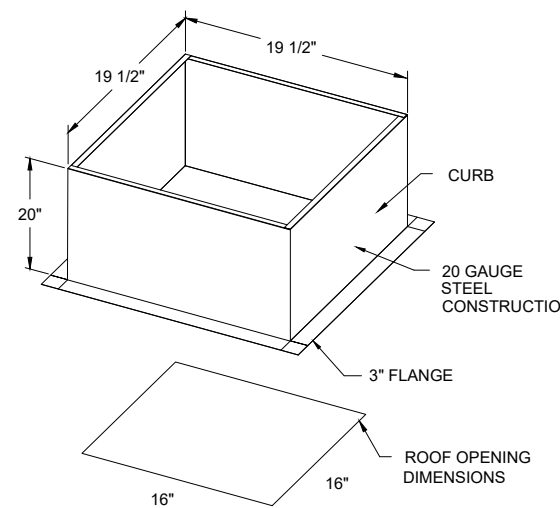
EXHAUST FAN INFORMATION - Job#2887537

FAN UNIT NO.	TAG	FAN UNIT MODEL #	CFM	ESP.	RPM	H.P.	B.H.P.	Ø	VOLT	FLA	WEIGHT (LBS.)	SONES
2	Sandwich Station	DU33HFA	525	0.500	1212	0.333	0.1210	1	115	4.4	58	7.7

FAN #2 DU33HFA - EXHAUST FAN (SANDWICHSTATION)

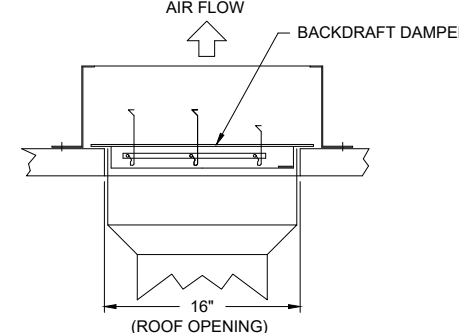


- FEATURES:
- DIRECT DRIVE CONSTRUCTION (NO BELTS/PULLEYS)
  - ROOF MOUNTED FANS
  - UL705
  - VARIABLE SPEED CONTROL
  - INTERNAL WIRING
  - WEATHERPROOF DISCONNECT
  - THERMAL OVERLOAD PROTECTION (SINGLE PHASE)
- OPTIONS
- ECM WIRING PACKAGE  
SCR-11 BIRD SCREEN  
1 1/2-BDD DAMPER



PITCHED CURBS ARE AVAILABLE  
FOR PITCHED ROOFS.  
SPECIFY PITCH:  
EXAMPLE: 7/12 PITCH = 30° SLOPE

BACKDRAFT DAMPER INSTALLATION



FOR QUESTIONS, CALL THE  
SOUTHWEST FLORIDA REGIONAL OFFICE  
4519 GEORGE RD, SUITE 150, TAMPA, FL 33634  
PHONE: (800)378-2471 FAX: (813)354-4825

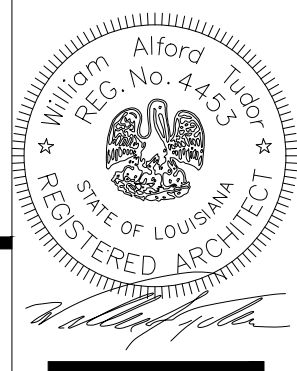


**CAPTIVEAIRE**

JOB Dunkin Donuts - Prototype 5.3			
LOCATION	. 0	JOB #	2887537
DATE	1/13/2017	DRAWN BY	DC
DWG #	4	SCALE	NTS
REV.			

**Alliance**  
DESIGN GROUP, LLC

1439 Centre Ct., Ste 401  
Alexandria, LA 71301  
Ph: 318.445.3151  
F: 318.445.3988  
E: adg@adgllc.net



**DUNKIN' BASKIN-ROBBINS**  
1111 MacArthur Drive  
Alexandria, Louisiana 71301

PROJECT NO: 26010  
DRAWN: DJH  
CHECKED: WAT  
DATE: APRIL 2026  
LAST REV:

**M3.01**

© 2026, Alliance Design Group, LLC all rights reserved.